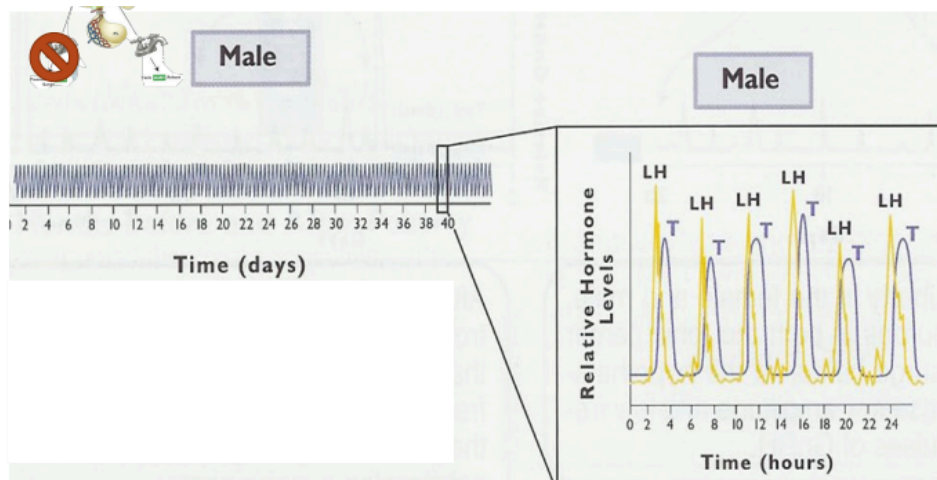


Spermatogenesis

Spermatogenesis

1. What kind of hormone release do males have?
2. What causes the Tonic release of LH and FSH?
3. How often do LH episodes occur? What is released soon after an LH release?



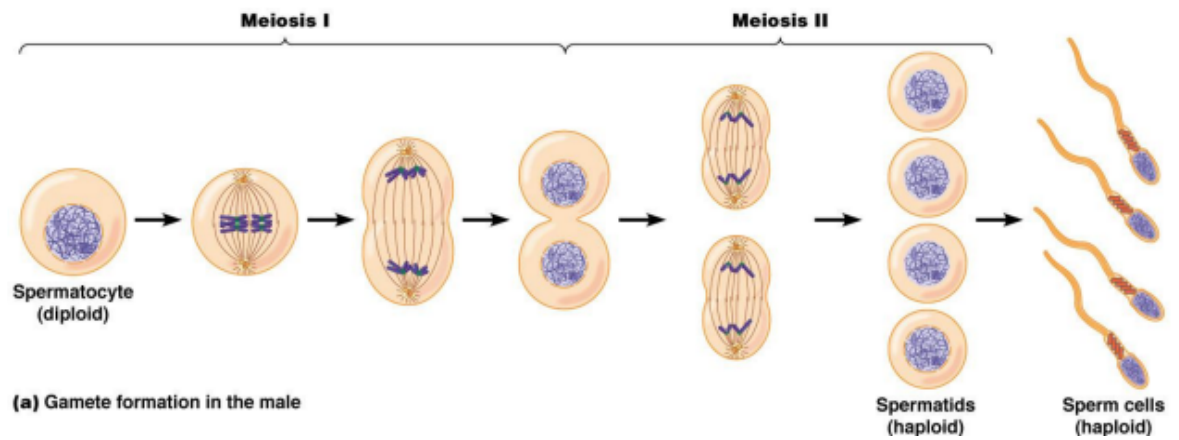
Male 2-Cell 2-Gonadotropin Theory

4. What receptors do Leydig cells have and where are they located?
5. What receptors do Sertoli cells have and where are they located?
6. What are the three phases of spermatogenesis?

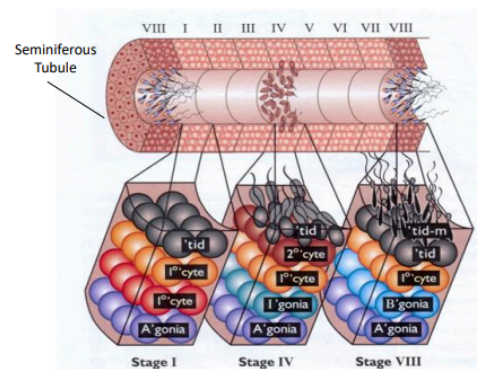
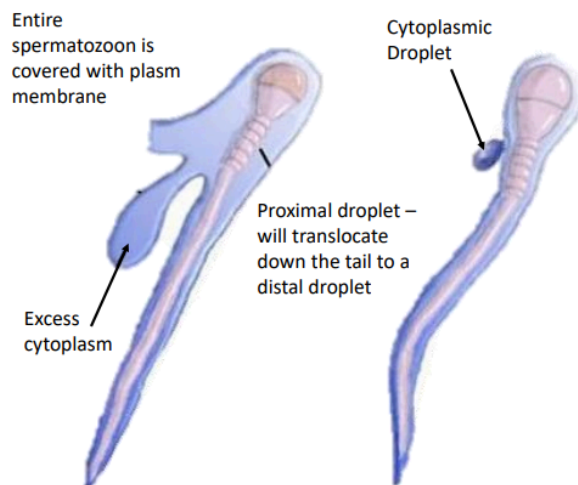
7. What happens during Proliferation and what sperm cells are present during this phase?

8. What causes apoptosis?

9. What happens during the Meiosis phase?



10. What happens during the Differentiation Phase and what are the phases this is broken into?



There are 8 – 13 different stages within the seminiferous tubule

Sperm cells mature along and within the seminiferous tubule

11. What is the cycle of the Seminiferous Epithelium?

12. Compartments of the seminiferous tubule

Basal	
Adluminal	
Luminal	

13. What is Spermiation?

14. Which type of sperm is most sensitive to heat stress?