

Male Reproductive Anatomy Pt. 2

1. What are the functions of the Epididymis?

2. What happens to unejaculated sperm?

3. Where are sperm produced in the testes?

4. Parts of the Spermatic Cord

Ductus Deferens (Vas Deferens)	
Cremaster Muscle	
Pampiniform Plexus	

5. What are the functions of the Vas deferens and Ampulla for the transport of sperm?

6. What happens to sperm stored in the Ampulla?

7. What are the functions of Seminal Plasma?
8. What are the major and minor sources of Seminal Plasma?
9. What are the different species characteristics when it comes to their reproductive anatomy?
 - Ram -
 - Boar -
 - Stallion -
10. What are the 3 main sections of the penis?

8. What are the major and minor sources of Seminal Plasma?

9. What are the different species characteristics when it comes to their reproductive anatomy?

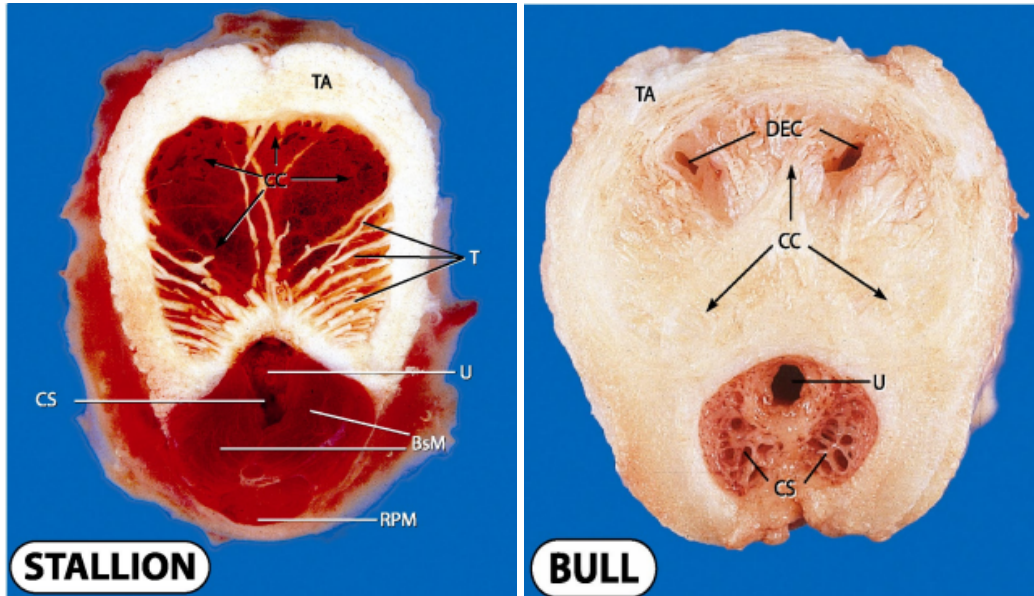
Ram -

Boar -

Stallion -

10. What are the 3 main sections of the penis?

11. What 2 parts form the Penis?



CS: corpus spongiosum | CC: corpus cavernosum | TA: tunica albuginea

12. What are the two types of penis and what species have them?

13. Muscles associated with the Penis

Bulbocavernosus (bulbospongiosus)	
Ischiocavernosus	
Retractor penis	

14. What are the steps of Spermatozoa Transport?

Excurrent Duct System Review...

